

# TOUR RIDER

## “PAPER WORLD” Show by “MIMIRICHI” Clowns & Pantomime Theater

6 people including 4 artists, 1 technician, 1 executive.

Performance duration ~80 minutes, break/no break.

Duration of the show and interval could be adapted according  
COMPANY needs.

---

(COMPANY)  
agrees to provide MIMIRICHI (THEATER) with the listed in the rider items and/or services.

*COMPANY also undertakes to coordinate this document with all authorized persons and services (fire safety service, security service, safety engineer, etc.) on which performance depends, as well as with technicians carrying out lighting and sound design for planning realization of the show at performing space (VENUE).*

## HOUSEHOLD RIDER

### 1. TRANSPORTATION

Transportation, artists transfer, and luggage carriage provided by COMPANY.

**Air transfer** - Economy Class, 6 tickets.

**Local transportation** between the airports, hotels, venues, rehearsals, performances, or other activities of THEATER staff, props (luggage), and personal belongings by comfortable bus, passenger minibus, or cars. The THEATER team arrives at least 1 day before the performance and leaves at least one day after the performance.

### 2. ACCOMMODATION

COMPANY should provide a detailed schedule (plan) of stay before or after THEATER team arrival.

**Booked hotel** (at least 4 stars) for each day of the tour starting at least 1 day before the performance and 1 day after - **2 double rooms + 2 single rooms**, or 3 double rooms.

The hotel cards/questionnaires must be filled out in advance, artists receive keys when settling in. Tour manager of the theater gets a printout with artist's room numbers.

### **3. FOOD**

Full breakfast and 2 hot meals per day (lunch & dinner) and an ample quantity of non-alcoholic beverages should be arranged and provided by the COMPANY during the entire duration of the tour, starting with the day of the arrival.

***Note:** Meals could be replaced by a daily allowance in cash (the amount must be agreed with the THEATER in advance).*

### **4. DRESSING ROOMS**

COMPANY should provide at least 2 dressing rooms large enough to accommodate 4 actors and THEATER team. The makeup rooms should be equipped with mirrors with mirror lighting, make-up tables, chairs, and costume racks (clothes hangers and suits) in sufficient quantities.

Dressing rooms must be located near the stage (not more than one floor away). Dressing rooms should have nearby toilets that are not for public use and preferably with showers.

Starting with Technical/Dress Rehearsals and continuing through performances, dressing rooms should be supplied with snacks, sandwiches, and 1.5L of non-carbonated spring water for each person for each show.

No later than 2 hours before the show, the air temperature in the make-up rooms and auditorium should be set to at least 20 C°.

Makeup rooms should be closed with a key which is kept by the THEATER tour manager.

- Makeup rooms, stage, and backstage space must be clean, uncluttered, and free of objects not related to the performance.
- By the time the artists arrive at the venue and props are delivered, technical services on the venue should be present at their workplaces.
- The staff should be competent, sober, and attentive to all requests of the THEATER'S employees.

- THEATER actors and personnel conducting the installation of the show, from the moment of props delivery to the venue, must have access to all auxiliary premises that are relevant for installation of the show (fly bars, scene pockets, make-up rooms, toilets, etc.)

Installation takes up to 4 hours. Dismantling takes 2 hours. During installation and dismantling all scene space should be free from objects not related to the show and persons not participating in the installation and conduct of the show.

## **5. ESSENTIAL PROPS**

COMPANY should provide the newsprint rolls (40-57 g/m<sup>2</sup>), up to 20 kg per each show, PVA glue (polyvinyl acryl), Scotch tape (clear), duct tape (black if stage floor is black, white - if stage floor is white).

The paper could be found at any polygraph facility (unused, raw material, etc.).

## TECHNICAL RIDER

COMPANY guarantees complete readiness and tuning of sound and lighting equipment by the time when show rehearsal begins. Otherwise, any responsibility for possible delay at beginning of the shows due to an unprepared venue will not concern performers.

From the moment of the THEATER arrival, and until the end of the show presence of the VENUE'S Lighting engineer and Lighting technicians engaged in devices outweighed/redirecting strictly mandatory on the venue. They must be fully aware of all nuances of hanging, connection, adjustment, and operation with lighting devices.

### 1. STAGE SPECIFICATIONS

- Stage dimensions (max): 14m wide X 10m deep (including wings)  
Working area except for the legs and wings: 10m wide X 10m deep
- Stage dimensions (min): 8m wide X 5m deep (including wings)  
Working area except for the legs and wings: 5m wide X 5m deep
- The presence of wings (coulisses) on each side is mandatory
- Presence of 2 free working fly bars
- White backdrop (Black – if white is not available)
- White linoleum floor (Black – if white is not available)

In case of impossibility of preliminary inspection of VENUE by the Theater Director himself, the COMPANY provides him complete information about technical and other venue features as follows:

- Size, the configuration of venue (photos are desirable)
- The area behind the scenes, space for placing props (photos are desirable)
- Technical parameters of structures, fastenings, fly bars on the ceiling/gridiron (photos of the ceiling are desirable)
- Possibility of suspension of working props
- Information about sound equipment, its presence or absence at the venue

## ON STAGE:

- Fog machine (with DMX) – 2 pc
- PC Light 1 kW with protective grid and WITHOUT lens (type Fresnel Strong STR-650-1000-PC, Stand Lighting-GX 9-5, Cantata PC F.A.L. ADB C103 or similar) with DMX – 1 pc
- 2 monitors on the left and right sides of the stage
- 1 stair with direct access from the stage to the auditorium

**Note:** Using of fog machine during the show have to be preliminary conform between Inviting party and local person responsible for fire safety.

## 2. LIGHTING

Example set:

- Lighting console with 30 submasters – 54 channels
- 78 PC light 1kW
- 20 PAR can 64-CP 62
- 1 Zoom Profile 1kW (13°-42°)
- 1 Zoom Profile 1kW (9°-20°)
- 1 stroboscope ATOMIC 3000W (or similar with DMX) – *not mandatory*
- Color gels Lee Filter:
  - Red, Blue, Purple, Yellow
  - N° 104 = 25, 26, 27
  - N° 106 = 4, 10, 14, 16, 18, 20, 22, 24, 28
  - N° 132 = 5, 9, 13, 15, 17, 19, 21, 23, 29
  - N° 181 = 2, 3, 6, 8, 11, 12, 22, 30

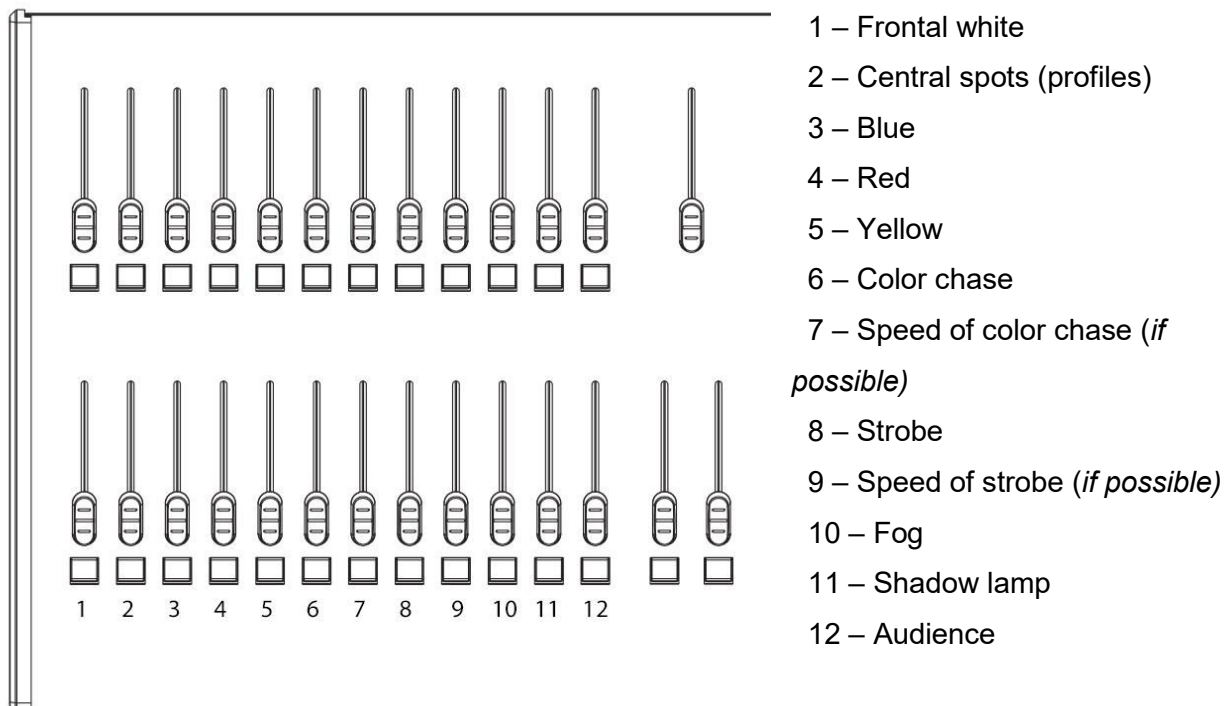
**Note:** LED PARs, PCs, moving heads, (wash, beam, etc.) are also welcome.

Number of lights and follow spots may vary depending on the size of the stage.

Preferred that follow spot (or better two follow spots) could be located to be able to cover the entire stage and the area of the first 5 audience rows or more. We need VENUE'S follow spot operators with communication (via intercom or walkie-talkie).

We would like to operate the auditorium light directly from the Lighting Console (or nearby it). If the lights in the audience are switched on/off in another place, we need an assistant or stagehand with communication (via intercom or walkie-talkie).

### The Lighting Console programming example:



### 3. SOUND

COMPANY should provide a professional audio stereo system in working order such that the entire theater audience area (including the entire balcony and front of orchestra seating) will be covered to a level of 95db SPL.

- 1 sound mixer:
  - Minimum: 1 stereo line input channel (or 2 mono line inputs), 1 microphone input, 2 aux outputs (monitors line), main stereo output;
  - Maximum: 3 stereo line input channel (or 6 mono line inputs), 2 microphone inputs, 2 aux outputs (monitors line), main stereo output;
- 2 monitors (350W) on the floor stands (left and right side of the stage) – 2 separated aux post-faders;

**Note:** THEATER sound technician must be able to see and hear the performance quite well as he is a part of the show. For venues seating over 500 people, we ask for the control position in the auditorium (if possible).

The lighting console and sound mixer must be illuminated (i.e. gooseneck lamps) and located together at one table for convenient use of both devices simultaneously by the THEATER technician. The table should have communication with follow-spot operators and stagehand (via intercom or walkie-talkie).

In case it's not technically possible to place the sound mixer and lighting console in one place, communication between the sound mixer and lighting console should be provided (via intercom or walkie-talkie) and lighting assistant in case of need.

**Note:** Intercom is preferable, walkie-talkie can create audible interference when turned on.

## VENUE STAFF

SET IN - 4h	RUNNING TIME - 1h 20m	AFTER THE SHOW - 2h
1 assistant stage manager, 1 stagehand	1 assistant stage manager	1 assistant stage manager, 1 stagehand, cleaners
1 master electrician, 1 lighting engineer	1 master electrician, 1 lighting engineer	
1 sound engineer – 2 h	1 sound engineer	

Read, Understood and Agreed:

\_\_\_\_\_  
*Signature of COMPANY*

\_\_\_\_\_  
*Signature of THEATER*

\_\_\_\_\_  
*Date*

\_\_\_\_\_  
*Date*

**MIMIRICHI  
"PAPER WORLD"  
Big stage**

	PC light 1kw	78
	PAR Can 64 CP62	20
	Zoom Profile 1kw (13°-42°)	1
	Zoom Profile 1kw (9°-20°)	1
	Strobe Atomic 3000	1
	Floor stand	1
	1* PC light 1-2 kw without lens Channels	1
	1...54 Channels	1
	Spot light brought by the Company 2	2
	Fog machine	1

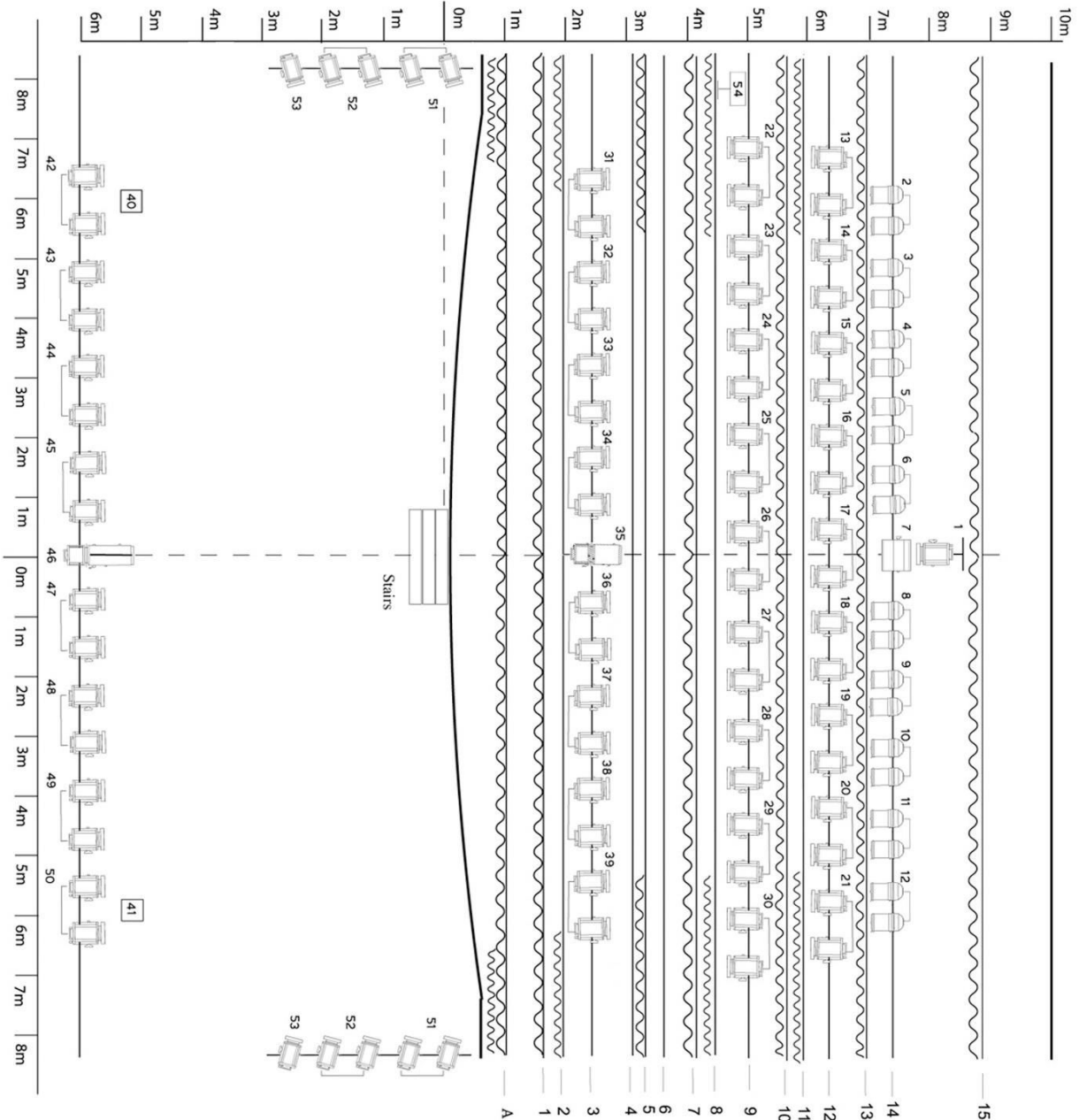
**LEE Filters:**

- 104 [Deep amber/Yellow] (25, 26, 27)
- 106 [Primary red] (4, 10, 14, 16, 18, 20, 24, 28)
- 132 [Medium blue] (5, 9, 13, 15, 17, 19, 21, 23, 29)
- 181 [Congo blue/Purple] (2, 3, 6, 8, 11, 12, 22, 30)

**A - Proscenium frame**

- 1- Border
- 2 - Legs
- 3 - Light
- 4 - Props bar
- 5 - Border
- 6 - Props bar
- 7 - Border
- 8 - Legs
- 9 - Light
- 10 - Border
- 11 - Legs
- 12 - Light
- 13 - Border
- 14 - Light
- 15 - Backdrop

- 1 - PAR Can 64 CP62 (2-6 channels) can be changed to PC light 1kw
- PC light 1kw (only 13-30 channels) can be changed to PAR Can 64 CP62
- 2 - The final position of the legs is decided at the Mimirichi arrival
- 3 - Focus and installation can be performed simultaneously
- 4 - The position of the lights is decided at the Mimirichi arrival





**MIMIRICHI  
"PAPER WORLD"  
Small stage**

	PC light 1kw	78
	PAR Can 64 CP62	20
	Zoom Profile 1kw (13°-42°)	1
	Zoom Profile 1kw (9°-20°)	1
	Strobe Atomic 3000	1
	Floor stand	1
	PC light 1-2 kw without lens	1
	1....,54 Channels	1
	Spot light brought by the Company	2
	Fog machine	1

**LEE Filters:**

- 104 [Deep amber/Yellow] (25, 26, 27)
- 106 [Primary red] (4, 10, 14, 16, 18, 20, 24, 28)
- 132 [Medium blue] (5, 9, 13, 15, 17, 19, 21, 23, 29)
- 181 [Congo blue/Purple] (2, 3, 6, 8, 11, 12, 22, 30)

**A - Proscenium frame**

- 1- Border
- 2 - Legs
- 3 - Light
- 4 - Props bar
- 5 - Border
- 6 - Props bar
- 7 - Border
- 8 - Legs
- 9 - Light
- 10 - Border
- 11 - Legs
- 12 - Light
- 13 - Border
- 14 - Light
- 15 - Backdrop

- 1 - PAR Can 64 CP62 (2-6 channels) can be changed to PC light kw
- PC light 1kw (only 13-30 channels) can be changed to PAR Can 64 CP62
- 2 - The final position of the legs is decided at the Mimirichi arrival
- 3 - Focus and installation can be performed simultaneously
- 4 - The position of the lights is decided at the Mimirichi arrival

